

San Diego Regional Center

Carlos Flores, Executive Director
4355 Ruffin Road, Suite 200, San Diego, CA 92123
Phone: (858) 576-2996 • Fax: (858) 576-2873
E-mail: info@sdrcc.org
www.sdrcc.org



Spring 2009

Performance Report for San Diego Regional Center

Every year, the Department of Developmental Services (DDS) contracts with regional centers in California to serve consumers and families and, every year DDS looks at how well the regional centers are doing. This report will give you information about the San Diego Regional Center.

Last year, at San Diego Regional Center (SDRC) we served about 18,220 consumers. The charts on page 2 tell you about the consumers we serve. You'll also see how well we are doing in meeting our goals and in fulfilling our contract with DDS.

At SDRC, we want to improve every year, do better than the state average, and meet or exceed the DDS standards.

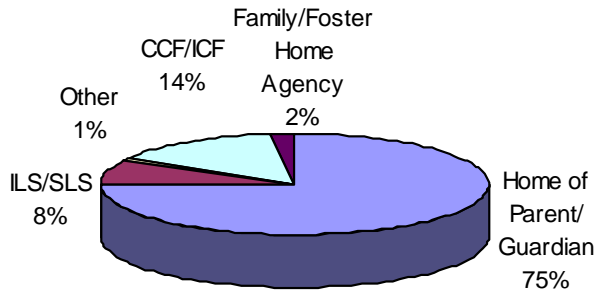
We hope this report helps you learn more about SDRC. If you have any questions or comments, please contact the Public Information Coordinator at (858) 576-2966.

Carlos Flores
Executive Director, San Diego Regional Center

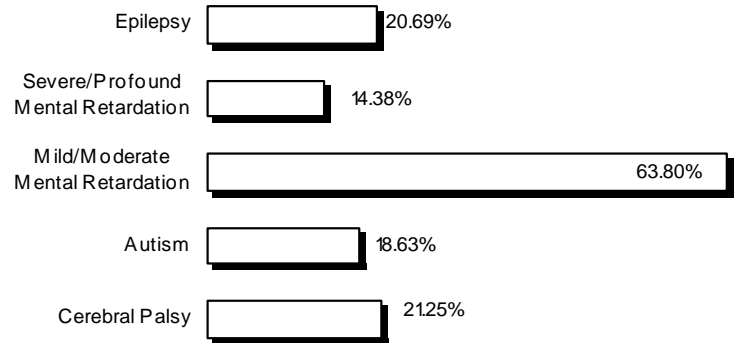
Who uses SDRC?

These charts tell you about who SDRC consumers are and where they live.

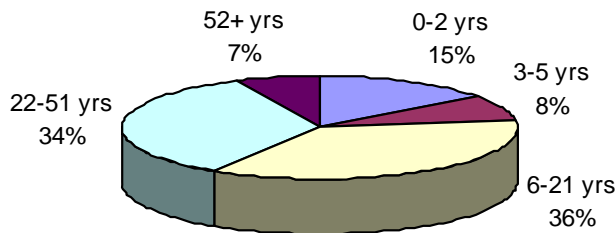
WHERE SDRC CONSUMERS LIVE



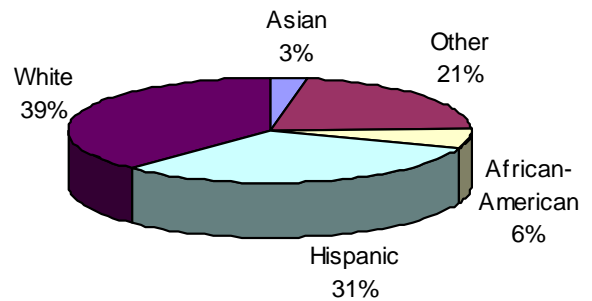
PRIMARY DIAGNOSIS OF SDRC CONSUMERS



AGE OF SDRC CONSUMERS



ETHNICITY OF SDRC CONSUMERS



How well is SDRC performing?

This chart tells you about 5 areas where DDS wants each regional center to keep improving.

The first column tells you how SDRC was doing at the beginning of 2008. And, the second column shows how SDRC was doing at the end of 2008.

To see how SDRC compares to the other regional centers in the state, compare the numbers to the state averages (in the shaded columns).

Regional Center Goals (based on Lanterman Act)	December 2007		December 2008	
	State Average	SDRC	State Average	SDRC
Less consumers live in developmental centers	1.20%	0.93%	1.03%	0.82%
More children live with families	98.06%	98.07%	98.38%	98.38%
More adults live in home settings*	71.38%	69.89%	72.25%	70.46%
Less children live in large facilities (more than 6 people)	0.15%	0.28%	0.14%	0.28%
Less adults live in large facilities (more than 6 people)	4.94%	5.04%	4.55%	4.40%

* Home settings include: independent living, supported living, Adult Family Home Agency homes, and consumers' family homes.

Did SDRC meet DDS standards?

Read below to see how well SDRC did in meeting DDS compliance standards:

Areas Measured	Last Period	Current Period
Passes independent audit	Yes	Yes
Passes DDS audit	Yes	Yes
Audits vendors as required	Met	Met
Didn't overspend operations budget	Yes	Yes
Participates in the federal waiver	Yes	Yes
CDERs are updated as required (<i>CDER is the Client Development Evaluation Report with information about the consumer's diagnosis</i>)*	NA	NA
Intake/Assessment timelines for consumers age 3 or older met	100.00%	92.95%
IPP (<i>Individual Program Plan</i>) requirements met	99.87%	99.72%
IFSP (<i>Individualized Family Service Plan</i>) requirements met	89.12%	88.31%

*Measure temporarily suspended pending implementation of the Revised CDER.

What about other performance areas?

In the future, we will measure how well we are doing in other areas, including:

- Increasing the number of consumers who work,
- Getting better pay for consumers who work,
- Making sure consumers get medical and dental services, and
- Meeting Intake/Assessment and IFSP timelines for children 0–3.

Want more information?

Contact the Public Information Coordinator at (858) 576-2966.